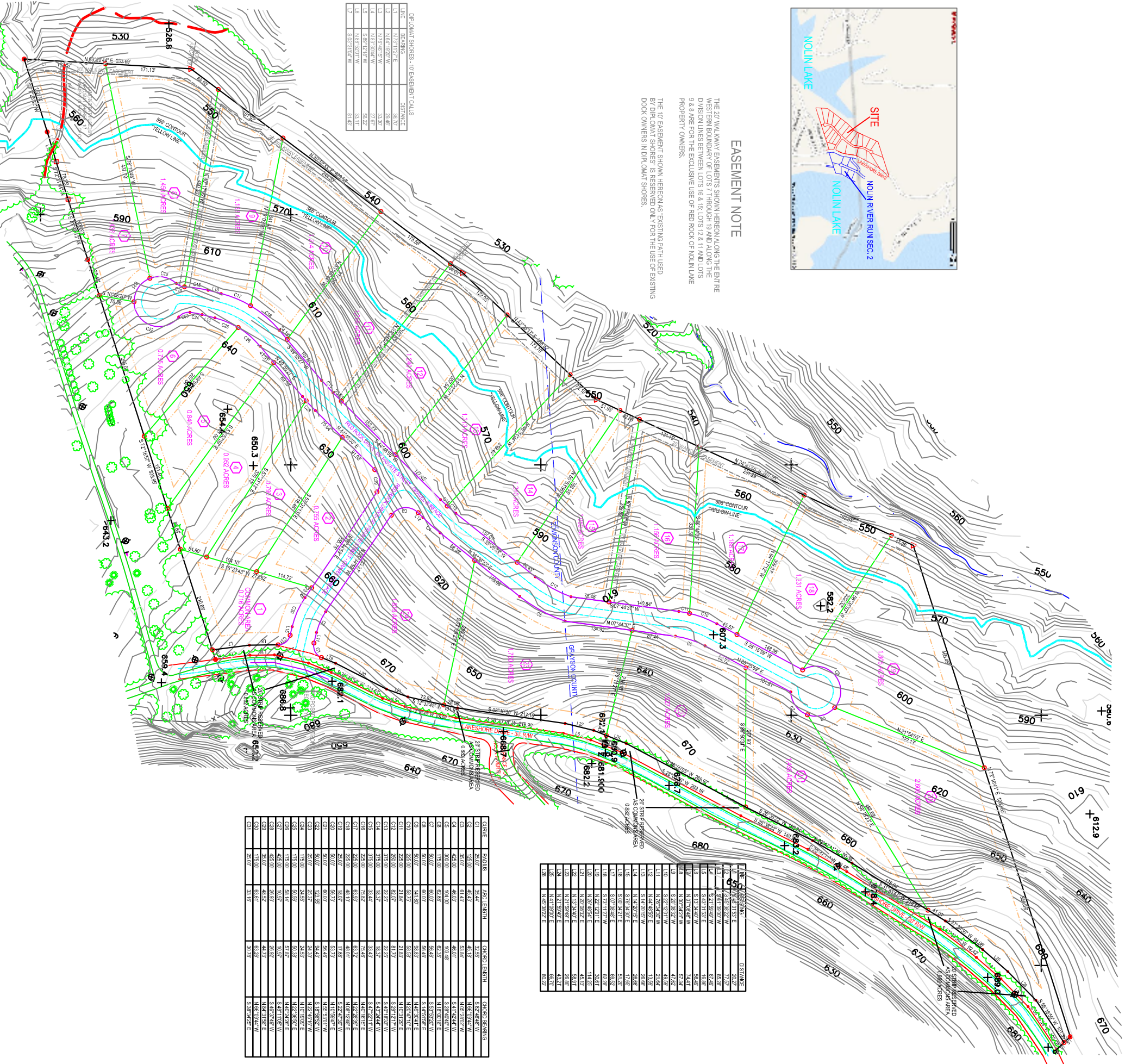


**EASEMENT NOTE**

THE 20' WALKWAY EASEMENTS SHOWN HEREON ALONG THE ENTIRE WESTERN BOUNDARY OF LOTS 7 THROUGH 19 AND ALONG THE DIVISION LINES BETWEEN LOTS 18 & 19, LOTS 12 & 11 AND LOTS 9 & 8 ARE FOR THE EXCLUSIVE USE OF RED ROCK OF NOLUN LAKE PROPERTY OWNERS.

THE 10' EASEMENT SHOWN HEREON AS EXISTING PATH USED BY DIPLOMAT SHORES IS RESERVED ONLY FOR THE USE OF EXISTING DOCK OWNERS IN DIPLOMAT SHORES.

LINE	BEARING	DISTANCE
1	N 73° 12' 27" E	33.69
2	N 64° 11' 27" W	20.67
3	N 76° 48' 18" W	33.97
4	N 62° 32' 44" W	23.87
5	N 88° 52' 01" W	33.11
7	S 10° 11' 04" W	81.47



LINE	BEARING	DISTANCE
10	N 73° 12' 27" E	20.27
11	S 24° 32' 52" W	77.67
12	S 41° 03' 22" W	63.62
13	S 41° 11' 52" E	16.86
14	S 13° 34' 48" E	56.46
15	N 07° 34' 24" W	74.41
16	N 07° 34' 24" W	57.34
17	S 21° 28' 34" E	41.62
18	N 76° 34' 32" W	21.84
19	N 44° 46' 55" E	13.97
20	S 14° 20' 17" W	26.69
21	N 14° 20' 17" E	26.69
22	S 70° 34' 32" W	11.66
23	S 07° 34' 24" E	62.82
24	S 27° 12' 01" E	62.82
25	N 28° 46' 54" E	30.61
26	N 07° 34' 24" W	114.25
27	N 07° 34' 24" W	43.81
28	N 21° 28' 34" E	43.81
29	N 41° 03' 22" E	28.80
30	N 41° 03' 22" E	43.21
31	N 41° 03' 22" E	66.70
32	N 45° 32' 22" E	60.22

CURVE	RADIUS	ARC LENGTH	CHORD LENGTH	CHORD BEARING
C1	25.00	35.44	22.57	S 82° 44' 48" W
C2	125.00	46.43	46.18	N 60° 58' 04" W
C3	50.00	61.43	53.84	N 60° 58' 04" W
C4	425.00	40.53	40.97	S 14° 24' 44" W
C5	175.00	62.98	62.95	N 18° 30' 12" E
C6	175.00	60.00	56.46	S 14° 31' 24" W
C7	50.00	60.00	56.46	N 69° 52' 41" E
C8	225.00	38.79	38.82	N 69° 52' 41" E
C9	225.00	33.44	33.47	S 17° 22' 11" W
C10	225.00	73.82	73.86	N 40° 18' 15" E
C11	225.00	48.17	48.17	N 40° 18' 15" E
C12	225.00	22.25	22.25	S 60° 14' 33" W
C13	375.00	18.37	18.37	S 17° 22' 11" W
C14	375.00	33.44	33.47	S 17° 22' 11" W
C15	375.00	48.17	48.17	N 40° 18' 15" E
C16	375.00	73.82	73.86	N 40° 18' 15" E
C17	375.00	114.17	114.17	N 40° 18' 15" E
C18	375.00	154.52	154.52	N 40° 18' 15" E
C19	375.00	184.87	184.87	N 40° 18' 15" E
C20	50.00	56.72	53.72	N 10° 58' 44" E
C21	50.00	60.00	56.46	N 69° 52' 41" W
C22	50.00	125.50	54.43	S 18° 36' 31" W
C23	175.00	62.98	62.95	N 10° 58' 44" E
C24	175.00	50.96	50.96	N 10° 58' 44" E
C25	175.00	50.96	50.96	N 10° 58' 44" E
C26	425.00	10.97	10.97	N 40° 18' 15" W
C27	425.00	20.94	20.94	S 48° 11' 03" W
C28	425.00	20.94	20.94	S 48° 11' 03" W
C29	175.00	62.98	62.95	N 69° 52' 41" W
C30	175.00	62.98	62.95	N 69° 52' 41" W
C31	25.00	33.16	30.79	S 38° 44' 24" E